



*“A world of **VALUE** created  
without the exploitation of  
people or natural resources “*

# ABOUT CONSERVE HRP

**Conserve HRP** is a social enterprise that **upcycles waste** to create high quality fashion accessories products while **empowering marginalized communities** in India.

We work with 5 artisan groups and employ **300 artisans (75% women)**, using a wide range of upcycled materials. Additionally, we use a patented process to convert plastic waste into new materials. Each order from Conserve HRP has an immediate impact and provides artisans with **employment opportunities, skills-based training, and counselling support**.

Conserve HRP is the wholesale business segment of Conserve India, Delhi-based nonprofit, whose goal is to drive **sustainable development** in India while emphasizing **environmental conservation** and **circular business practices**. As India's leading exporter of upcycled products, we have worked with several global brands and have been awarded international awards on Green Fashion.



Fair Trade partnerships emphasize dialogue, transparency and respect, and seeks greater equity in international trade. These principles contribute to sustainable development by offering better trading conditions and securing the rights of marginalized producers and workers. We are **Fair Trade certified** through **World Fair Trade Organization (WFTO)**, **ISO certified**, and are working towards our **Nest Ethical Handcraft Seal**.



Over the last two decades, we have worked to conserve and protect the environment through: energy efficiency, waste management, and educational programs. Plastic pollution in India was a key issue that inspired us to invest in circular principles and design upcycled products from waste.

The urgency to empower women and advance gender equality is clear and we drive a constant mission to inspire women to rise. We are a mother- daughter led organization that employs a predominantly female artisan workforce, we strive to uplift and empower women to be their very best.

**FASHION:** Tote Bags,  
Backpacks & Duffel Bags



## TENT TOTE 1



**Code:** CC22\_01

**Dimensions (cm):** 35x40x13

**Material:** Recycled Army Tent

## TENT TOTE 2



**Code:** CC22\_02

**Dimensions (cm):** 40x40x14

**Material:** Recycled Army Tent



## TENT TOTE 4



**Code:** CC22\_04

**Dimensions (cm):** 35x40x10

**Material:** Recycled Army Tent

## TENT TOTE 5



**Code:** CC22\_05

**Dimensions (cm):** 40x35x13

**Material:** Recycled Army Tent



# CHANDERI TOTE 1



**Code:** CC22\_22

**Dimensions (cm):** 35x30x8

**Material:** Recycled Chanderi Yarn

# CHANDERI TOTE 2



**Code:** CC22\_23

**Dimensions (cm):** 35x30x8

**Material:** Recycled Chanderi Yarn



## HRP TOTE 1



**Code:** CC22\_369

**Dimensions (cm):** 38x43x13

**Material:** Handmade Recycled Plastic

## HRP TOTE 2



**Code:** CC22\_370

**Dimensions (cm):** 38x43x13

**Material:** Handmade Recycled Plastic



### HRP TOTE 3



**Code:** CC22\_376

**Dimensions (cm):** 52x30x14

**Material:** Handmade Recycled Plastic

### HRP TOTE 4



**Code:** CC22\_379

**Dimensions (cm):** 40x11x42

**Material:** Handmade Recycled Plastic



## HRP BACKPACK 1



**Code:** CC22\_375

**Dimensions (cm):** 25.5x40x10

**Material:** Handmade Recycled Plastic

## HRP BACKPACK 2



**Code:** CC22\_378

**Dimensions (cm):** 36x29x11

**Material:** Handmade Recycled Plastic

## TARP BAG 1



**Code:** CC22\_54

**Dimensions (cm):** 30x35x12

**Material:** Tarpaulin Sheet

## TARP BAG 2



**Code:** CC22\_55

**Dimensions (cm):** 30x40x13

**Material:** Tarpaulin Sheet



# FRUIT BAG



**Code:** CC22\_53

**Dimensions (cm):** 30x38x10

**Material:** Tetra Pack Waste

# BANJARA BAG



**Code:** CC22\_380

**Dimensions (cm):** 40x40

**Material:** Polyester waste



## LEATHER TOTE BAG



**Code:** CC22\_170

**Dimensions (cm):** 32x32x14 cm

**Material:** Leather

## LEATHER TOTE BAG



**Code:** CC22\_173

**Dimensions (cm):** 33x31x13 cm

**Material:** Leather





## CANVAS TOTE BAG 1



**Code:** CC22\_169

**Dimensions (cm):** 32x23x10 cm

**Material:** Canvas Fabric

## CANVAS TOTE BAG 2



**Code:** CC22\_175

**Dimensions (cm):** 33x28x13 cm

**Material:** Canvas Fabric



## CANVAS TOTE BAG LEATHER BASE



**Code:** CC22\_175a

**Dimensions (cm):** 33x28x13 cm

**Material:** Canvas Fabric

## CANVAS TOTE BAG 4



**Code:** CC22\_176

**Dimensions (cm):** 33x28x14 cm

**Material:** Canvas Fabric





## BACKPACK



**Code:** CC22\_199

**Dimensions (cm):** 32x24x9.5 cm

**Material:** Tetron Fabric

## EMBROIDERY TOTE



**Code:** CC22\_352

**Dimensions (cm):** 47.5x32x13

**Material:** Embroidered Cotton

## CANVAS TOTE



**Code:** CC22\_353

**Dimensions (cm):** 40x40x9

**Material:** Woven canvas





### LEATHER TOTE BAG 3



**Code:** CC22\_174

**Dimensions (cm):** 35x35x11.5 cm

**Material:** Leather

### CANVAS TOTE BAG 1



**Code:** CC22\_322

**Dimensions (cm):** 56x41x13 cm

**Material:** Canvas & Leather

## PLASTIC TOTE 1



**Code:** CC22\_208

**Dimensions (cm):** WxH- 49x31 cm  
base 39x13 cm

**Material:** Plastic Rope

## PLASTIC TOTE 2



**Code:** CC22\_209

**Dimensions (cm):** WxH- 42x23 cm  
base 28x16cm

**Material:** Plastic Rope





### CORD BAG 3



**Code:** CC22\_325

**Dimensions (cm):** 44x26 cm

**Material:** Plastic Cord

### CORD BAG 1



**Code:** CC22\_326

**Dimensions (cm):** 47x24 cm

**Material:** Plastic Cord



## CORD BAG 2



**Code:** CC22\_327

**Dimensions (cm):** 58x24 cm

**Material:** Plastic Cord



## TEXTIE TOTE 1



**Code:** CC22\_219

**Dimensions (cm):** 25x29.5 cm

**Material:** Cotton Fabric

## TEXTIE TOTE 2



**Code:** CC22\_220

**Dimensions (cm):** 30x37 cm

**Material:** Cotton Fabric

## CROCHET TOTE



**Code:** CC22\_218

**Dimensions (cm):** 47x42 cm

**Material:** cotton thread

## TEXTIE TOTE 3



**Code:** CC22\_221

**Dimensions (cm):** 30x37 cm

**Material:** Cotton Fabric



## TOTE BAG 2



**Code:** CC22\_146

**Dimensions (cm):** 37x41

**Material:** Cotton Thread

## TOTE BAG 3



**Code:** CC22\_147

**Dimensions (cm):** 40x52

**Material:** Cotton Thread



## JUTE TOTE



**Code:** CC22\_357

**Dimensions (cm):** 46x27

**Material:** jute rope

## RAFIA TOTE 1



**Code:** CC22\_364

**Dimensions (cm):** 38x48

**Material:** Rafia



## RAFIA TOTE 2



**Code:** CC22\_367

**Dimensions (cm):** 40x32x7.5

**Material:** Rafia

## RAFIA TOTE 3



**Code:** CC22\_368

**Dimensions (cm):** 44x33

**Material:** Rafia

## DENIM TOTE



**Code:** CC22\_222

**Dimensions (cm):** 30x30 cm

**Material:** old denim

## UNIFORM TOTE



**Code:** CC22\_225

**Dimensions (cm):** 37x35 cm

**Material:** old uniform



## SUEDE LEATHER BAG



**Code:** CC22\_323

**Dimensions (cm):** 40x37x4 cm

**Material:** Suede Leather

## DENIM BAG



**Code:** CC22\_285

**Dimensions (cm):** 46x26

**Material:** Denim



## ILLUSION TOTE BAG 1



**Code:** CC22\_329

**Dimensions (cm):** 39x39 cm

**Material:** Crochet with Cotton Thread





## ILLUSION TOTE BAG 2



**Code:** CC22\_330

**Dimensions (cm):** 32x30 cm

**Material:** Crochet with  
Cotton Thread

## ILLUSION TOTE BAG 3



**Code:** CC22\_331

**Dimensions (cm):** 35x31 cm

**Material:** Crochet with Cotton Thread



## TRANSPARENT JUTE TOTE BAG BROWN



**Code:** CC22\_332

**Dimensions (cm):** 29x35 cm

**Material:** Jute Thread

## JUTE TOTE 1



**Code:** CC22\_333

**Dimensions (cm):** 50x29 cm

**Material:** Jute Thread





## RAFIA TOTE 1



**Code:** CC22\_334

**Dimensions (cm):** 38x28 cm

**Material:** Rafia Fabric

## RAFIA TOTE 2



**Code:** CC22\_336

**Dimensions (cm):** 21x32x9 cm

**Material:** Rafia Fabric



## RAFIA BAG



**Code:** CC22\_337

**Dimensions (cm):** 35x19 cm

**Material:** Raffia Fabric





## CROCHET POMPOM TOTE



**Code:** CC22\_338

**Dimensions (cm):** 56x27 cm

**Material:** Crochet with cotton thread

## CROCHET JHOLA TOTE



**Code:** CC22\_339

**Dimensions (cm):** 41x29 cm

**Material:** Crochet with Cotton Thread

## MACRAME CIRCLE TOTE



**Code:** CC22\_340

**Dimensions (cm):** 41x29 cm

**Material:** Crochet with Cotton Thread

## CROCHET JHOLA TOTE 2



**Code:** CC22\_341

**Dimensions (cm):** 23x22 cm

**Material:** Crochet with Cotton Thread





### CROCHET JHOLA TOTE 3



**Code:** CC22\_342

**Dimensions (cm):** 22x22 cm

**Material:** Crochet with Cotton Thread

### CROCHET TOTE



**Code:** CC22\_343

**Dimensions (cm):** 37x27 cm

**Material:** Crochet with Cotton Thread



## JUTE TOTE 2



**Code:** CC22\_344

**Dimensions (cm):** 40x37 cm

**Material:** Jute Thread

## CANVAS TOTE BAG 2



**Code:** CC22\_346

**Dimensions (cm):** 54x36x12 cm

**Material:** Canvas



## LEATHER PATCH DUFFLE



**Code:** CC22\_254

**Dimensions (cm):** 45x30x21

**Material:** Recycled denim leather tags

## DENIM DUFFLE BAG



**Code:** CC22\_284

**Dimensions (cm):** 32x20x13

**Material:** Recycled Denim



## NYLON GROCERY BAG



**Code:** PT01

**Dimensions (cm):** 43.2 x 22.9 x 33



**Code:** PT02

**Dimensions (cm):** 43.2 x 22.9 x 33





**Code:** PT03

**Dimensions (cm):** 40.6 x 38.1 x 17.8



**Code:** PT04

**Dimensions (cm):** 23 x 13.4 x 6.3



**Code:** PT05

**Dimensions (cm):** 23 x 13.4 x 6.3



**Code:** PT06

**Dimensions (cm):** 23 x 13.4 x 6.3





**Code:** PT07

**Dimensions (cm):** 43.2 x 20.3 x 33



**Code:** PT08

**Dimensions (cm):** 19 x 7 x 8



**Code:** PT09

**Dimensions (cm)**

**L** 40.7 x 38.1, **M** 38.1 x 38.1 **S** 27.9 x 22.8



# **FASHION:** Sling & Messenger Bag

## TARPAULIN SLING BAG



**Code:** CC22\_56

**Dimensions (cm):** 24x20x10 cm

**Material:** Tarpaulin  
Sheets

## TARPAULIN MESSENGER BAG 1



**Code:** CC22\_196

**Dimensions (cm):** 33x34x9cm

**Material:** Tarpaulin Sheets



## TARPAULIN MESSENGER BAG 2



**Code:** CC22\_197

**Dimensions (cm):** 33x34x9 cm

**Material:** Tarpaulin  
Sheets

## TARPAULIN MESSENGER BAG 3



**Code:** CC22\_198

**Dimensions (cm):** 33x34x9cm

**Material:** Tarpaulin  
Sheets

## HOSIERY SLING BAG 1



**Code:** CC22\_141

**Dimensions (cm):** 21x23

**Material:** Recycled Hosiery

## HOSIERY SLING BAG



**Code:** CC22\_144

**Dimensions (cm):** 24x28

**Material:** Recycled Hosiery



## HOSIERY SLING BAG 2



**Code:** CC22\_145

**Dimensions (cm):** 27x28

**Material:** Recycled Hosiery

## JUTE SLING BAG



**Code:** CC22\_217

**Dimensions (cm):** 24x24

**Material:** jute rope



## TUBE POUCH 1



**Code:** CC22\_41

**Dimensions (cm):** 16x25x8

**Material:** Tyre Tube

## TUBE POUCH 4



**Code:** CC22\_44

**Dimensions (cm):** 16x25x8

**Material:** Tyre Tube



## FIRE HOSE MESSENGER BAG



**Code:** CC22\_252

**Dimensions (cm):** 33x15x30

**Material:** fire hose

## FIRE HOSE SLING BAG



**Code:** CC22\_253

**Dimensions (cm):** 21x18x5.5

**Material:** fire hose

## LEATHER SLING BAG 1



**Code:** CC22\_355

**Dimensions (cm):** 22x5

**Material:** leather scrap

## LEATHER SLING BAG 2



**Code:** CC22\_356

**Dimensions (cm):** 19x14x6

**Material:** leather scrap



## FIREHOSE BAG 2



**Code:** CC22\_382

**Dimensions (cm):** 28x26x8

**Material:** Fire Hose

## HRP SLING BAG



**Code:** CC22\_374

**Dimensions (cm):** 23x23x9

**Material:** Handmade Recycled Plastic

## CORK AND TENT CANVAS SLING BAG



**Code:** CC22\_227

**Dimensions (cm):** 20x28x6 cm

**Material:** cork fabric & recycled canvas tents

## CORK AND DENIM SLING BAG



**Code:** CC22\_228

**Dimensions (cm):** 30x20 cm

**Material:** cork fabric & recycled denim





## DENIM SLING BAG



**Code:** CC22\_282

**Dimensions (cm):** 19x18

**Material:** Recycled Denim

## ILLUSION SLING BAG



**Code:** CC22\_328

**Dimensions (cm):** 17.5x18 cm

**Material:** Crochet with  
cotton Thread



## RAFIA SLING BAG



**Code:** CC22\_335

**Dimensions (cm):** 16x17 cm

**Material:** Rafia Fabric



# **FASHION:** Clutch, Purse & Other

## LEATHER CORD PURSE



**Code:** CC22\_216

**Dimensions (cm):** 26x14

**Material:** Waxed  
Cotton cord

## CIRCLE BAG



**Code:** CC22\_324

**Dimensions (cm):** 26x16x6 cm

**Material:** Embroidery with sequins and  
beads





## POMPOM CLUTCH



**Code:** CC22\_316

**Dimensions (cm):** 28x22 cm

**Material:** Crochet with cotton thread

## CROCHET CLUTCH



**Code:** CC22\_318

**Dimensions (cm):** 29x21 cm

**Material:** Crochet with Cotton Thread

# FASHION: Wallet & Coin Purses



## HRP PURSE 1



**Code:** CC22\_256

**Dimensions (cm):** 20x10.5

**Material:** Handmade Recycled Plastic

## HRP PURSE 2



**Code:** CC22\_257

**Dimensions (cm):** 22x11

**Material:** Handmade Recycled Plastic with detachable strap

## CORK WALLET



**Code:** CC22\_201

**Dimensions (cm):** 11x9 cm

**Material:** Cork Fabric

## CORK WALLET 2



**Code:** CC22\_206

**Dimensions (cm):** 9x11.5 cm

**Material:** Cork Fabric



## CORK PURSE



**Code:** CC22\_207

**Dimensions (cm):** 20.5x10x3 cm

**Material:** Cork Fabric

## CORK CARD HOLDER MINI WALLET



**Code:** CC22\_203

**Dimensions (cm):** 10x8 cm

**Material:** Cork Fabric

## CORK CARD HOLDER MINI WALLET



**Code:** CC22\_204

**Dimensions (cm):** 10x8cm

**Material:** Cork Fabric



## CORK CARD HOLDER MINI WALLET 4



**Code:** CC22\_205

**Dimensions (cm):** 7.5x10 cm

**Material:** Cork Fabric

## CORK CARD HOLDER MINI WALLET



**Code:** CC22\_202

**Dimensions (cm):** 10x9 cm

**Material:** Cork Fabric

## TARPAULIN WALLET GREEN



**Code:** CC22\_212

**Dimensions (cm):** 9x11 cm

**Material:** tarpaulin

## DENIM WALLET



**Code:** CC22\_223

**Dimensions (cm):** 9x11 cm

**Material:** old denim



## UNIFORM WALLET



**Code:** CC22\_226

**Dimensions (cm):** 9x11 cm

**Material:** old uniform

## MINI WALLET 1



**Code:** CC22\_261

**Dimensions (cm):** 11.5x16 when open

**Material:** Leather

## MINI WALLET 2



**Code:** CC22\_262

**Dimensions (cm):** 11.5x16 when open

**Material:** Leather





## CARDHOLDER



**Code:** CC22\_269

**Dimensions (cm):** 10x7

**Material:** Hair on Leather

## FABRIC CAR HOLDER



**Code:** CC22\_112

**Dimensions(cm):** 10x7 cm

**Material:** cotton fabric

## LEATHER CARDHOLDER 1



**Code:** CC22\_258

**Dimensions (cm):** 9.5x6.5

**Material:** Leather

## LEATHER CARDHOLDER 2



**Code:** CC22\_259

**Dimensions (cm):** 9.5x6.5

**Material:** Leather



## COIN PURSE



**Code:** CC22\_260

**Dimensions (cm):** 9x9

**Material:** Leather

## JACQUARD COIN PURSE



**Code:** CC22\_321

**Dimensions (cm):** 16x12.5 cm

**Material:** Jacquard Fabric

## RED HRP CARD HOLDER



**Code:** CC22\_28

**Dimensions (cm):** 7x10

**Material:** Handmade Recycled Plastic

## BLACK HRP CARD HOLDER



**Code:** CC22\_33

**Dimensions (cm):** 7x10

**Material:** Handmade Recycled Plastic



## COIN PURSE 1



**Code:** CC22\_291

**Dimensions (cm):** 13x9x3.5

**Material:** Leather

## COIN PURSE 2



**Code:** CC22\_292

**Dimensions (cm):** 13x9x3.5

**Material:** Leather

# FASHION & LIFESTYLE:

## Pouch & Potli



## LEATHER WASH BAG



**Code:** CC22\_377

**Dimensions (cm):** 24x15x10

**Material:** leather

## RAFIA POUCH



**Code:** CC22\_354

**Dimensions (cm):** 27x17

**Material:** raffia

## RAFIA POUCH



**Code:** CC22\_362

**Dimensions (cm):** 33x21

**Material:** Rafia

## FABRIC POUCH 1



**Code:** CC22\_306

**Dimensions (cm):** 22x14.5

**Material:** Corduroy



## FABRIC POUCH 2



**Code:** CC22\_307

**Dimensions (cm):** 22x14.5

**Material:** Corduroy

## FABRIC POUCH 3



**Code:** CC22\_308

**Dimensions (cm):** 22x14.5

**Material:** Corduroy

## FABRIC POUCH 4



**Code:** CC22\_309

**Dimensions (cm):** 22x14.5

**Material:** Corduroy

## FABRIC POUCH 5



**Code:** CC22\_310

**Dimensions (cm):** 22x14.5

**Material:** Corduroy



## LEATHER POUCH 1



**Code:** CC22\_311

**Dimensions (cm):** 21x13x3 cm

**Material:** Suede Leather

## LEATHER POUCH 2



**Code:** CC22\_312

**Dimensions (cm):** 21x13x3 cm

**Material:** Suede Leather



### LEATHER POUCH 3



**Code:** CC22\_313

**Dimensions (cm):** 21x13x3 cm

**Material:** Suede Leather

### LEATHER POUCH 4



**Code:** CC22\_314

**Dimensions (cm):** 21x13x3 cm

**Material:** Suede Leather





## FABRIC POUCH 6



**Code:** CC22\_315

**Dimensions (cm):** 21x14 cm

**Material:** Jacquard Fabric

## RAFIA POUCH 1



**Code:** CC22\_317

**Dimensions (cm):** 29x24 cm

**Material:** Raffia Fabric



## RAFIA POUCH 2



**Code:** CC22\_319

**Dimensions (cm):** 33x20 cm

**Material:** Rafia Fabric

## JUTE POUCH 1



**Code:** CC22\_320

**Dimensions (cm):** 37x24 cm

**Material:** Jute and Rafia



## JUTE POUCH 2



**Code:** CC22\_345

**Dimensions (cm):** 22x15x7 cm

**Material:** Jute & Net Fabric

## LEATHER PATCH BAG



**Code:** CC22\_255

**Dimensions (cm):** 25x15x10

**Material:** recycled denim leather tags



## HRP POUCH RED



**Code:** CC22\_26

**Dimensions (cm):** 18x24

**Material:** Handmade Recycled Plastic

## BLACK HRP POUCH



**Code:** CC22\_31

**Dimensions (cm):** 18x24

**Material:** Handmade Recycled Plastic



## CANVAS POUCH 2



**Code:** CC22\_303

**Dimensions (cm):** 17x13

**Material:** Canvas

## CANVAS POUCH 1



**Code:** CC22\_302

**Dimensions (cm):** 24x17x9

**Material:** Canvas

## CANVAS POUCH 4



**Code:** CC22\_305

**Dimensions (cm):** 17.5x11.5

**Material:** Canvas

## CANVAS POUCH 3



**Code:** CC22\_304

**Dimensions (cm):** 17x13

**Material:** Canvas



## TARPAULIN POUCH BLUE



**Code:** CC22\_210

**Dimensions (cm):** 13x17 cm

**Material:** Tarpaulin

## TARPAULIN POUCH BLUE



**Code:** CC22\_211

**Dimensions (cm):** 13x17 cm

**Material:** Tarpaulin

## HOSIERY POUCH



**Code:** CC22\_213

**Dimensions (cm):** 13x14 cm

**Material:** Hosiery thread

## CROCHET POUCH



**Code:** CC22\_214

**Dimensions (cm):** 13x17 cm

**Material:** Crochet with cotton thread



## TENT CANVAS POUCH



**Code:** CC22\_215

**Dimensions (cm):** 13x17 cm

**Material:** old tent fabric

## UTILITY / MAKE UP POUCH WITH PLASTIC LINING



**Code:** CC22\_224

**Dimensions (cm):** 23x14x3.5 cm

**Material:** Cotton Fabric

## DENIM POUCH 1



**Code:** CC22\_274

**Dimensions (cm):** 18x12

**Material:** Recycled Denim

## DENIM POUCH 2



**Code:** CC22\_275

**Dimensions (cm):** 17x11

**Material:** Recycled Denim



### DENIM POUCH 3



**Code:** CC22\_276

**Dimensions (cm):** 18x12

**Material:** Recycled Denim

### DENIM POUCH 4



**Code:** CC22\_277

**Dimensions (cm):** 18x12

**Material:** Recycled Denim

## DENIM POUCH 5



**Code:** CC22\_283

**Dimensions (cm):** 21x18

**Material:** Recycled Denim

## FABRIC POUCH



**Code:** CC22\_230

**Dimensions(cm):** 25x10x5 cm

**Material:** cotton fabric



## DENIM POTLI BAG 1



**Code:** CC22\_278

**Dimensions (cm):** 18x30

**Material:** Recycled Denim

## DENIM POTLI BAG 2



**Code:** CC22\_279

**Dimensions (cm):** 18x30

**Material:** Recycled Denim

## DENIM POTLI BAG 3



**Code:** CC22\_280

**Dimensions (cm):** 17.5x30

**Material:** Recycled Denim

## DENIM POTLI BAG 4



**Code:** CC22\_281

**Dimensions (cm):** 18x30

**Material:** Recycled Denim



**LIFESTYLE:** Key chain

## FABRIC KEYCHAIN



**Code:** CC22\_114

**Dimensions(cm):** 6 x 7cm

**Material:** cotton fabric

## EM KEYCHAIN



**Code:** CC22\_231

**Dimensions(cm):** 4.5 x4.5 cm

**Material:** cotton fabric



## ROUND KEYCHAINS



**Code:** CC22\_195

**Dimensions (cm):** 4.5 cm

**Material:** Plastic Waste



## LEATHER KEYCHAIN 1



**Code:** CC22\_263

**Dimensions (cm):** 6x5

**Material:** Leather

## LEATHER KEYCHAIN 2



**Code:** CC22\_264

**Dimensions (cm):** 6x5

**Material:** Leather



## LEATHER KEYCHAIN 3



**Code:** CC22\_265

**Dimensions (cm):** 6.5x1.5

**Material:** Leather

## LEATHER KEYCHAIN 4



**Code:** CC22\_266

**Dimensions (cm):** 9x2 without hook

**Material:** Leather

## KEYCHAIN 5



**Code:** CC22\_267

**Dimensions (cm):** 9x2 without hook

**Material:** Hair on Leather

## KEYCHAIN 6



**Code:** CC22\_268

**Dimensions (cm):** 6.5x5.5

**Material:** Hair on Leather



## DENIM KEYCHAIN 1



**Code:** CC22\_270

**Dimensions (cm):** 8.5x4

**Material:** Denim & leather

## DENIM KEYCHAIN 2



**Code:** CC22\_271

**Dimensions (cm):** 7x4

**Material:** Denim

## DENIM KEYCHAIN 3



**Code:** CC22\_272

**Dimensions (cm):** 7x4

**Material:** Denim

## BLOCK KEYCHAIN



**Code:** CC22\_194

**Dimensions (cm):** 8x2x2 cm

**Material:** Plastic Waste



## MACRAME KEY CHAINS



**Code:** CC22\_351

**Dimensions (cm):** 21x3

**Material:** cotton thread

# HOME: Placemat & Coaster





## WHITE ROPE COASTER & PLACEMAT



**Code:** CC22\_61

**Dimensions (cm):** 11cm

**Material:** Cotton Rope



**Code:** CC22\_180

**Dimensions (cm):** 30cm

**Material:** Cotton Rope



## WHITE ROPE TRAY



**Code:** CC22\_62

**Dimensions (cm):** 21x26x4 cm

**Material:** Cotton Rope





## JUTE PLACEMENT



**Code:** CC22\_181

**Dimensions (cm):** 30cm

**Material:** Cotton & Jute Rope

## JUTE COASTER



**Code:** CC22\_182

**Dimensions (cm):** 10cm

**Material:** Cotton & Jute Rope



## WHITE COASTER



**Code:** CC22\_183

**Dimensions (cm):** 8cm

**Material:** Recycled Plastic  
Waste

## WHITE PLACEMENT



**Code:** CC22\_184

**Dimensions (cm):** 30cm

**Material:** Recycled Plastic  
Waste





## BLACK COASTER

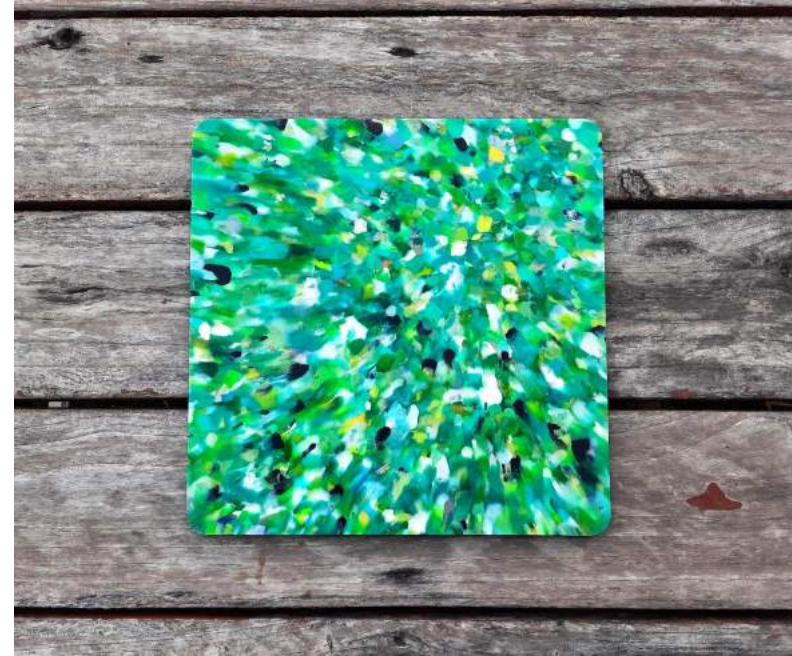


**Code:** CC22\_185

**Dimensions (cm):** 10 cm

**Material:** Recycled Plastic Waste

## SQUARE PLACEMAT



**Code:** CC22\_190

**Dimensions (cm):** 30cm 4mm thick

**Material:** Recycled Plastic Waste

## PLASTIC COASTER 1



**Code:** CC22\_79

**Dimensions (cm):** 8

**Material:** Recycled plastic waste

## PLASTIC COASTER 2



**Code:** CC22\_80

**Dimensions (cm):** 10 (sides)

**Material:** Recycled plastic waste

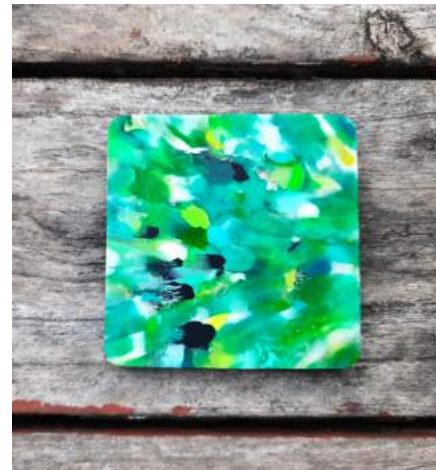




## SQUARE COASTER



**Code:** CC22\_187  
**Dimensions (cm):** 10cm 4mm thick  
**Material:** Recycled Plastic Waste



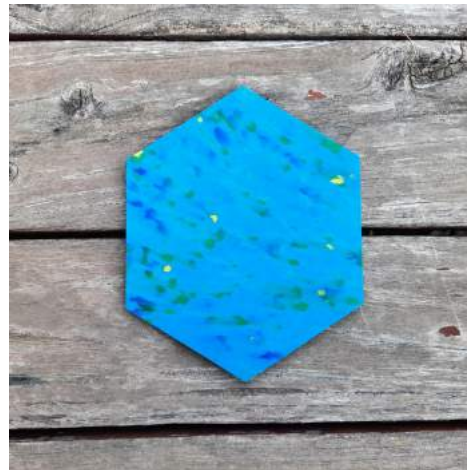


## HEX COASTER

**Code:** CC22\_188

**Dimensions (cm):** 10cm 4mm thick

**Material:** Recycled Plastic Waste







## ROUND COASTER

**Code:** CC22\_186

**Dimensions (cm):** 10cm 4mm thick

**Material:** Recycled Plastic Waste





## ROUND PLACEMAT



**Code:** CC22\_189

**Dimensions (cm):** 30cm 4mm thick

**Material:** Recycled Plastic Waste







## DENIM COASTERS.



**Code:** CC22\_273

**Dimensions (cm):** 9.5 cm

**Material:** Recycled Denim

**HOME:** Basket





## JUTE BASKET 1



**Code:** CC22\_65

**Dimensions (cm):** Big-25x25,  
Medium-20x20,  
small- 13x13

**Material:** Jute Rope

## JUTE BASKET 2



**Code:** CC22\_66

**Dimensions (cm):** Big-25x25,  
Medium-20x20,  
small- 13x13

**Material:** Jute Rope





## JUTE BASKET 3



**Code:** CC22\_67

**Dimensions (cm):** Big-25x25,  
Medium-20x20,  
small- 13x13

**Material:** Jute Rope

## JUTE BASKET 4



**Code:** CC22\_68

**Dimensions (cm):** Big-25x25,  
Medium-20x20,  
small- 13x13

**Material:** Jute Rope





## WHITE ROPE BASKET



**Code:** CC22\_60

**Dimensions (cm):** 19X11

**Material:** Cotton Rope

## JUTE BASKET 5



**Code:** CC22\_69

**Dimensions (cm):** Big-25x25,  
Medium-20x20,  
small- 13x13

**Material:** Jute Rope

# FASHION & LIFESTYLE:

## Miscellaneous



## LEAF PRINT DIARY 1



**Code:** CC22\_24

**Dimensions (cm):** 21x15

**Material:** Chanderi Fabric

## LEAF PRINT DIARY 2



**Code:** CC22\_25

**Dimensions (cm):** 21x15

**Material:** Chanderi Fabric

## PLASTIC PAPERWEIGHT



**Code:** CC22\_81

**Dimensions (cm):** 6x4

**Material:** Recycled plastic waste

## HRP DIARY



**Code:** CC22\_373

**Dimensions (cm):** 15x16

**Material:** Handmade Recycled Plastic



## RED HRP LUGGAGE TAG



**Code:** CC22\_27

**Dimensions (cm):** 13x9

**Material:** Handmade Recycled Plastic

## BLACK HRP LUGGAGE TAG



**Code:** CC22\_32

**Dimensions (cm):** 13x9

**Material:** Handmade Recycled Plastic

# HRP RED BOOKMARK 1



**Code:** CC22\_29

**Dimensions (cm):** 21x5

**Material:** Handmade Recycled Plastic

# HRP RED BOOKMARK 2



**Code:** CC22\_30

**Dimensions (cm):** 21x5

**Material:** Handmade Recycled Plastic





# BLACK HRP BOOKMARK 1



**Code:** CC22\_34

**Dimensions (cm):** 21x5

**Material:** Handmade Recycled Plastic

# BLACK HRP BOOKMARK 2



**Code:** CC22\_35

**Dimensions (cm):** 21x5

**Material:** Handmade Recycled Plastic



## 3 IN ONE COIN PURSE



**Code:** CC22\_229

**Dimensions (cm):** 14x4 cm

10x4 cm

8 x4 cm

**Material:** Cotton fabric

## CROCHET FRIDGE MAGNET



**Code:** CC22\_251

**Dimensions (cm):** 8x6 cm

**Material:** cotton thread





## EMBROIDERED BELTS



**Code:** CC22\_200

**Dimensions (cm):** 126x3.5

**Material:** Hand embroidered Cotton  
Thread & Fabric



## PENCIL HOLDER/MINI PLANTER



**Code:** CC22\_191

**Dimensions (cm):** 9x10 cm 7mm

**Material:** Recycled  
Plastic Waste

## PHOTO FRAME



**Code:** CC22\_192

**Dimensions (cm):** 27x32 cm 10 mm thick

**Material:** Recycled Plastic Waste





## SQUARE PLANTER



**Code:** CC22\_193

**Dimensions (cm):** 14x14 cm

**Material:** Recycled Plastic  
Waste



## DENIM CUSHION COVER 1



**Code:** CC22\_286

**Dimensions (cm):** 59x48

**Material:** Recycled Denim

## DENIM CUSHION COVER 2



**Code:** CC22\_287

**Dimensions (cm):** 37x40

**Material:** Recycled Denim



## DENIM GLOVES



**Code:** CC22\_288

**Dimensions (cm):** 32x20

**Material:** Recycled Denim

## DENIM STUFFED TOY



**Code:** CC22\_289

**Dimensions (cm):** 25x22

**Material:** Recycled Denim

## DENIM APRON



**Code:** CC22\_290

**Dimensions (cm):** 70x47

**Material:** Recycled Denim

## LEATHER POUFFE



**Code:** CC22\_350

**Dimensions (cm):** 49x9 cm

**Material:** Leather & Canvas





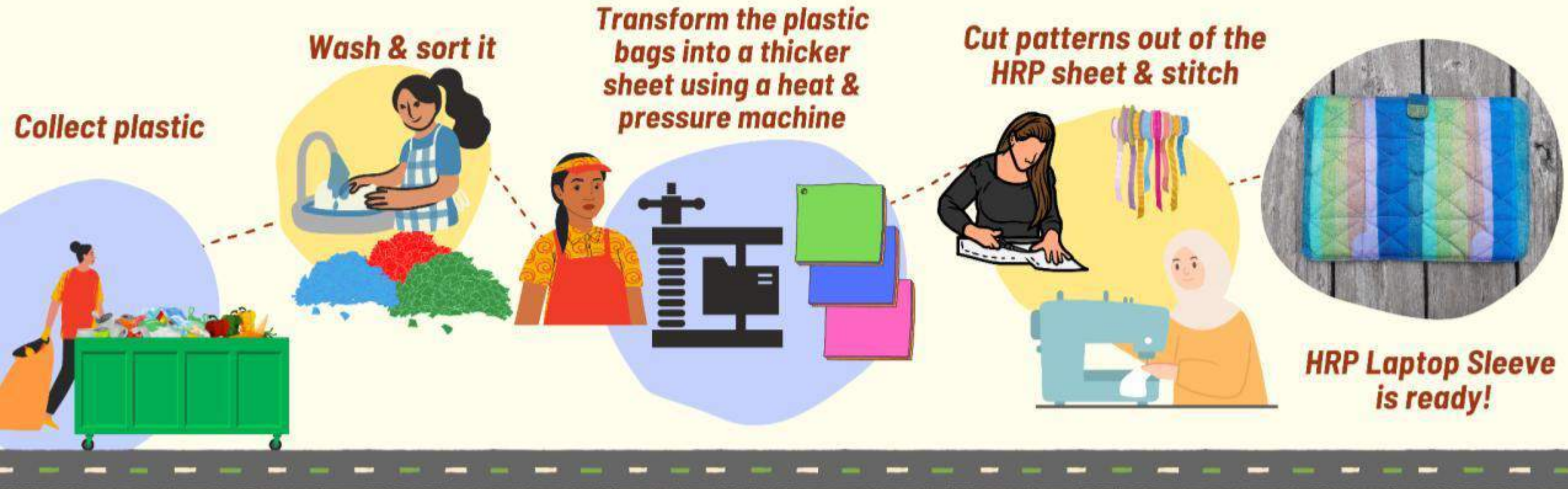
# OUR PROCESS : Materials

We work to give a **new life** to a wide range of materials including: recycled fabrics, recycled canvas and our proprietary materials for plastic and textile waste recycling.

Other materials include: tyre rubber, seat belt, leather labels from discarded denim, fire hose, juice cartons.



# Crafting Fashion from Plastic Waste





# Crafting Fashion from Textile Waste

Collect industrial  
(textile) waste

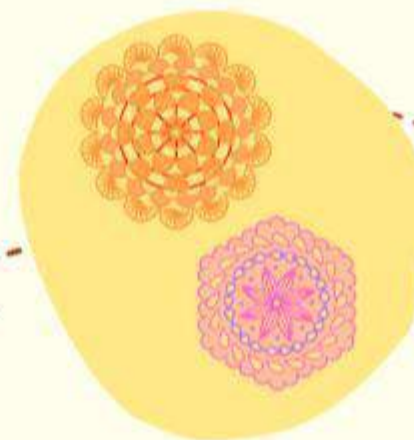


Shred the waste and  
make yarn out of it

Weave/Crochet  
the yarn



Make patterns as  
per choice of bag



Crochet Bags are ready!



## SUPPORTED BY

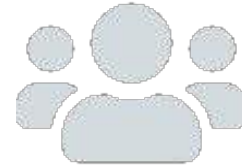




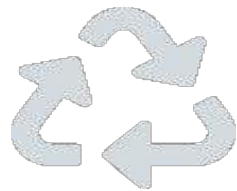
# OUR COMMUNITY

## Local Artisans

We train local artisans in stitching, embroidery, and weaving. Our counseling support remains an important aspect of our association with local artisans with a focus on emotional wellbeing and social inclusivity.



## Grassroots Recyclers



Our relationship with this community spans over 15 years. We train them on our patented technology for converting plastic into upcycled products. We also invite external trainers to provide workshops on financial literacy, networking, and microentrepreneurship.

## Afghani Refugee Artisans

We provide them with training in stitching, crochet, embroidery. We also organize exposure visits to different markets and sites in India to enhance their cultural awareness and providing counselling support.



# PLACE AN ORDER

## TERMS & CONDITIONS

**Minimum Order Quantity:**  
Per style/ color Combination

100 pcs (or +15% surcharge)

**Minimum Order Amount:**  
Euros  
US Dollars

3,000 EUR (or 15% surcharge)  
3,500 USD (or 15% surcharge)  
*\*open to negotiation*

**Payment Terms:**

50% advance payment pre-production upon receipt of invoice  
50% remaining balance paid prior to shipment

**Shipping Terms:**  
*\*pricing includes delivery to the port, all remaining  
courier charges to be paid by the buyer*

FOB Delhi

**Packaging (incl. costing):**

Polybag and Carton (*additional charges for plastic free packaging*)

## SAMPLING POLICY

**Sample Costs:**  
Existing samples (in-stock)  
Custom Samples:

Twice the wholesale price  
*\*sample charges are credited towards orders placed that meet minimum requirements*

Per hour per man rate + material costs  
*\*please provide detailed spec sheets*

Shipping:

All courier charges for sample are paid for by the buyer





# CONTACT US

Anita Ahuja (*President & Creative Director*)

Email:

[anita@conserveindia.org](mailto:anita@conserveindia.org)

Mob: +91 (0)99 99 50 1200

Kanika Ahuja (*Head of Marketing*)

Email:

[kanikaahuja27@gmail.com](mailto:kanikaahuja27@gmail.com)  
[kanika@conserveindia.org](mailto:kanika@conserveindia.org)

Mob: +91 (0)99 99 502002



[Conserveindia.org](http://Conserveindia.org)



[@Conserve.India](https://www.instagram.com/Conserve.India)



[@conserveindiango/](https://www.facebook.com/@conserveindiango/)



[@conserveindia](https://twitter.com/@conserveindia)

# STAY CONNECTED

*View more products on*



@lifaffa



LIFAFFA

*Learn more about our social interventions on*



@conserve.india



Conserve India